

FINNISH NETWORK FOR LANGUAGE EDUCATION POLICIES

NETWORK FOR LANGUAGE EDUCATION POLICIES

The Network brings together actors in the field of language education policy, raises awareness of the multidimensionality of language education, and influences decision-making about language education in Finland.

The Network is funded by the Ministry of Education and Culture, and it is coordinated by the Centre for Applied Language Studies, University of Jyväskylä.

THE NETWORK

The Network for Language Education Policies is an open forum for all who are interested in languages and language education. The network encourages discussion about language learning and teaching, the role of languages in society, language assessment, and languages in working life. Everyone is welcome to take part in this discussion as languages are an integral part of our everyday lives.

The Network brings together actors in the field of language education policy, organises events, promotes research and education in the field, and influences decision-making about language education in Finland. Since language education policy is not merely a national issue, the network also seeks international contacts and experiences.

NETWORK MISSION

- Language is essential to all societal functions.
- In language education, mother tongues, second languages and foreign languages are taken into consideration without setting them against each other.
- Language education includes informal, nonformal and formal learning. These forms are all recognized, acknowledged and made use of.

NETWORK FUNCTIONS

The network has four main functions:

- 1) To influence decision-making about language education policies
- 2) To spread information on current issues in language education
- 3) To carry out research related to language education policies
- 4) To give lectures and in-service training on language education policies

CURRENT ACTIVITIES

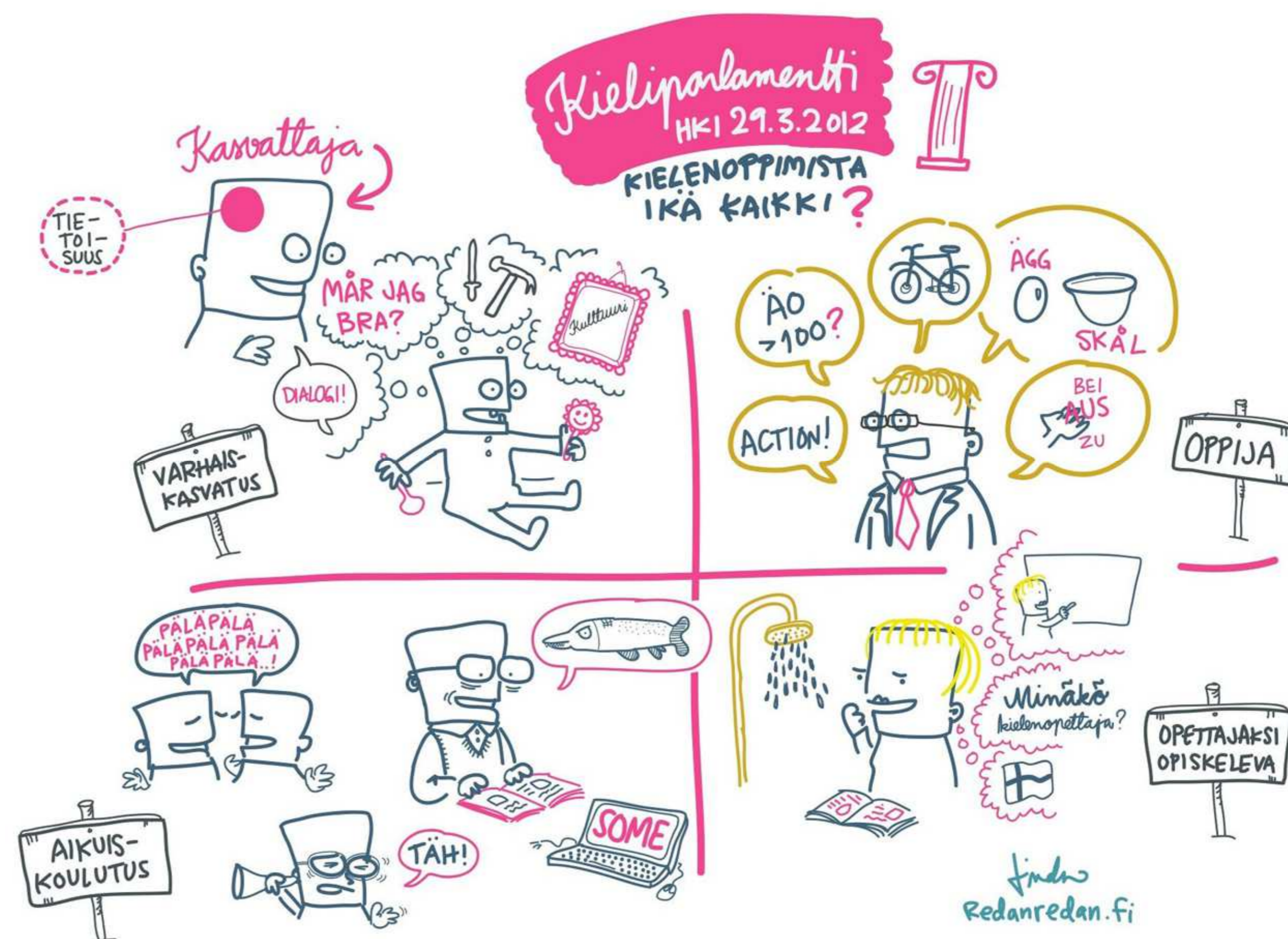
The network organises a Language Parliament, convening yearly to bring together various interest groups in language education. A position statement is issued as a result of the discussions in the Parliament. The objective is to provide visibility to the field.

The network maintains a web portal with news and current issues on language education. The portal also includes e.g. information about network events, materials produced by the network, and databases.

ANNUAL THEMES

The network's goals and mission are put into practice with the help of annual themes. The first two themes were multilingualism (2010), and language and communication skills in working life (2011). The theme in 2012 is teacher training, and in 2013 minorities.

The Language Parliament is the main event of the theme year. Also other network functions concentrate around topics related to the annual theme.



Visual notes from the Language Parliament 2012 by Linda Saukko-Rauta

KIELI, KOULUTUS JA YHTEISKUNTA - LANGUAGE, EDUCATION AND SOCIETY

The network publishes a freely available web journal called *Kieli, koulutus ja yhteiskunta* (Language, Education and Society) for short articles on research results and teaching experiments, interviews, policy columns etc.; see www.kieliverkosto.fi/journal.



Frontpage of Web Portal Finnish Network for Language Education Policies

CONTACTS

Centre for Applied Language Studies, University of Jyväskylä, Finland

Research coordinator, Teija Kangasvieri, +358.40.8053.017, teija.kangasvieri@jyu.fi

Leader of the Network, Senior researcher Sari Pöyhönen, +358.400.248.057, sari.h.poyhonen@jyu.fi

Chair of the steering group, Professor Tarja Nikula, +358.40.5565.877, tarja.nikula@jyu.fi

www.kieliverkosto.fi/en

kieliverkosto@jyu.fi

